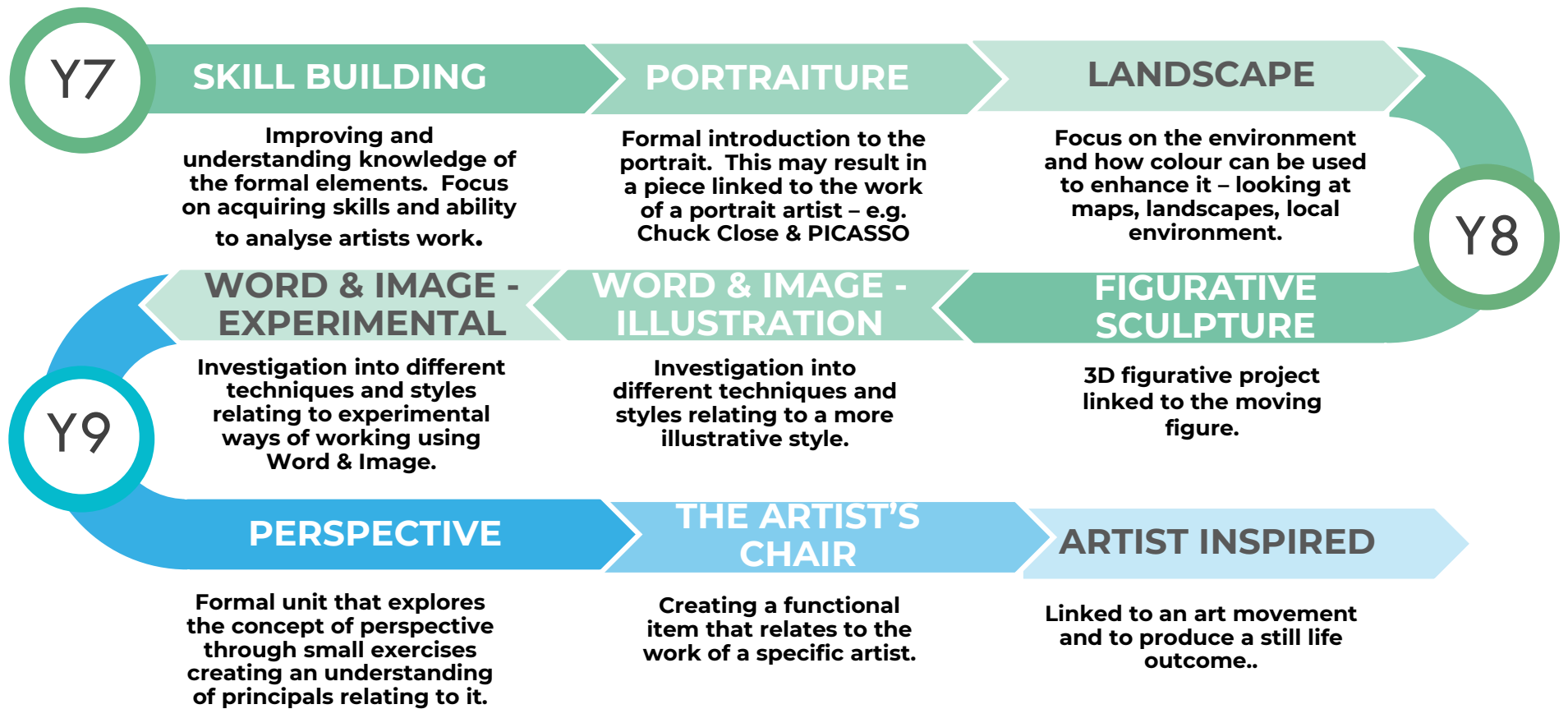
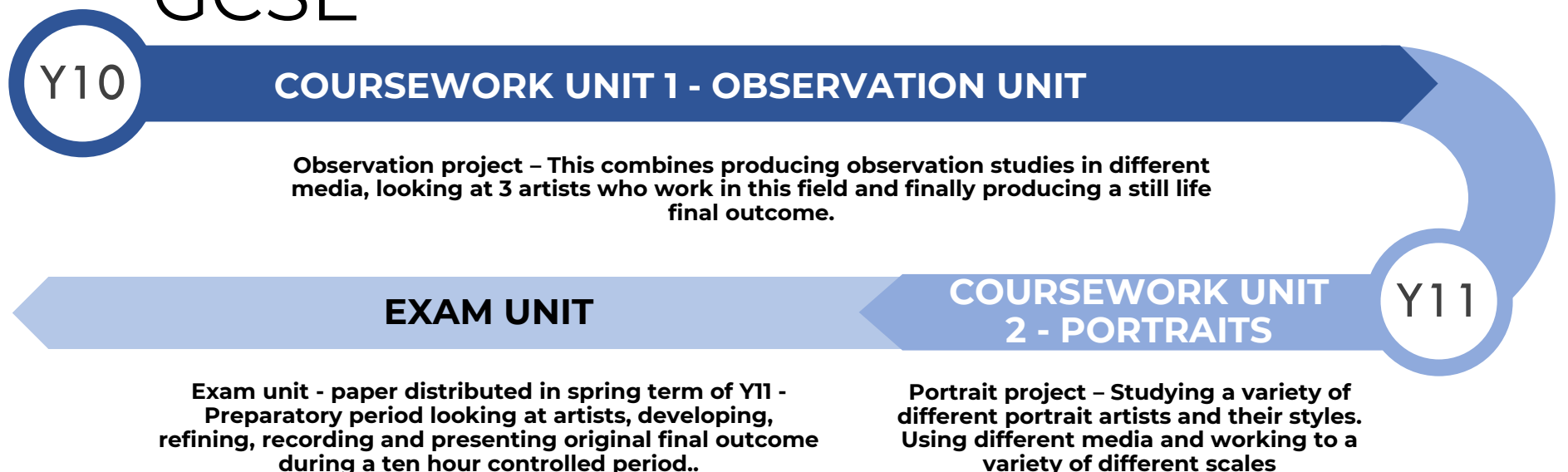


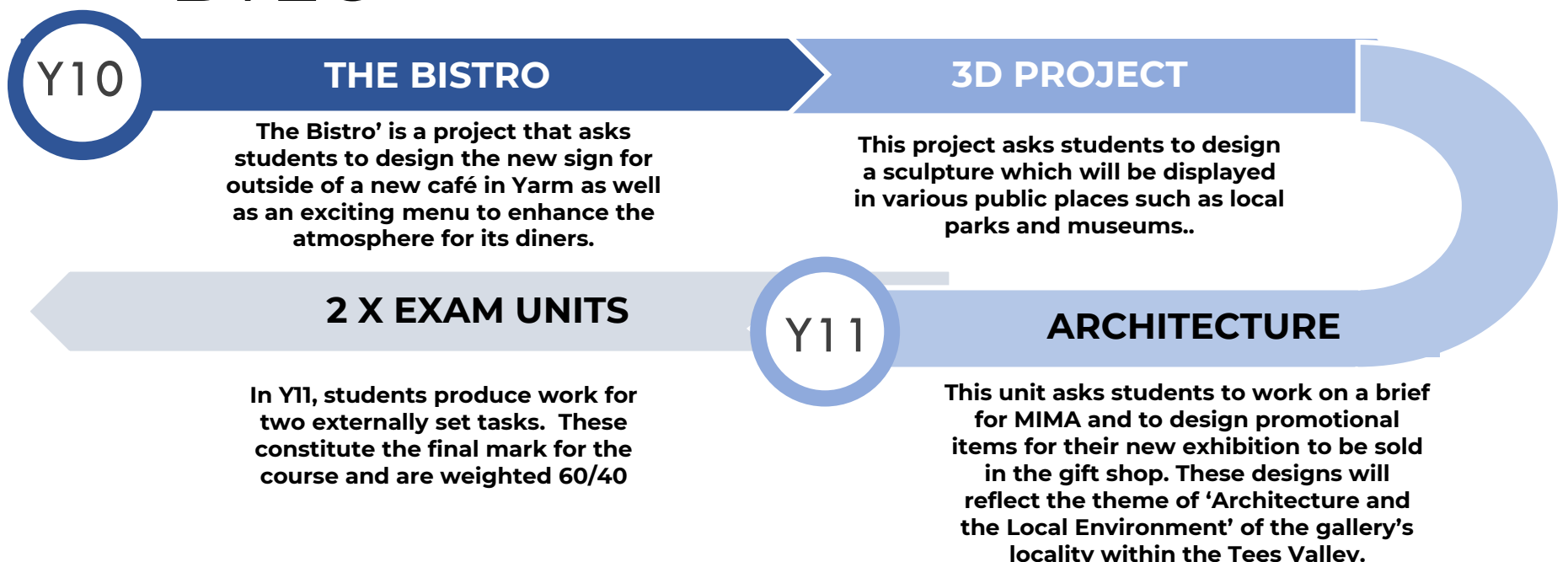
# ART LEARNING JOURNEY



## GCSE



## BTEC



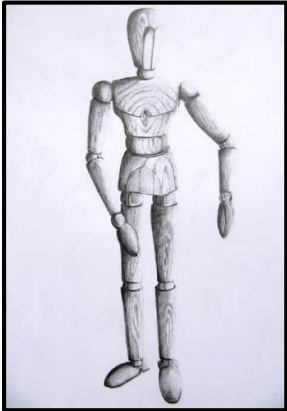
*Ready, Respectful, Responsible: Be the best you can be*

# YEAR 7 ART LEARNING JOURNEY

SKILL BUILDING

PORTRAITURE

COUNTRY, TOWN  
& COAST

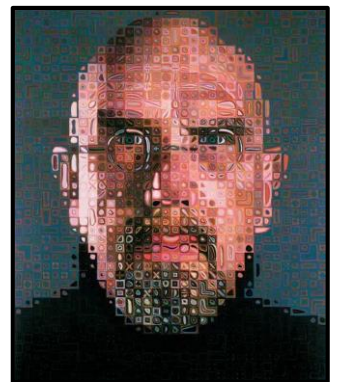


Cultural Identity and Diversity  
exploring line, tone and colour.

Y7

SKILL BUILDING

Work based around improving and  
understanding knowledge of the  
formal elements. Focus on  
acquiring skills and ability to  
analyse artists work.

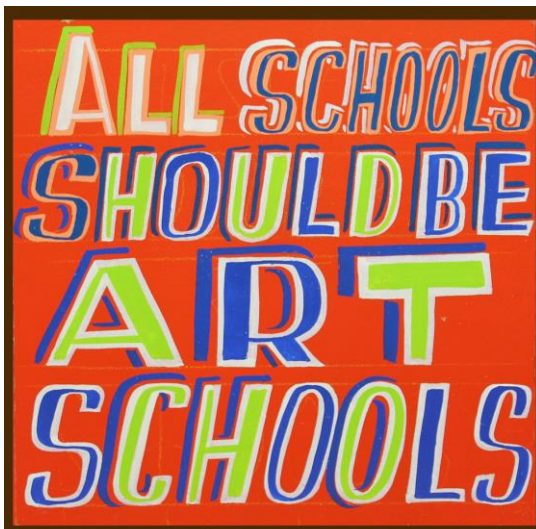
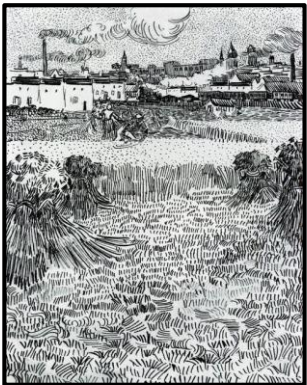


PORTRAITURE

Formal introduction to the  
construction of the portrait.  
This may result in a piece  
linked to the work of a portrait  
artist – e.g. Chuck Close &  
PICASSO

LANDSCAPE

Focus on the environment and how  
colour can be used to enhance it –  
looking at maps, landscapes, local  
environment – Artists could include  
Van Gogh, Ruth Allen, Len Tabner etc.



*Ready, Respectful, Responsible: Be the best you can be*

# YEAR 8 ART LEARNING JOURNEY

FIGURATIVE  
SCULPTURE

WORD & IMAGE  
ILLUSTRATION

WORD & IMAGE  
EXPERIMENTAL



**'Artists @ Work'.**

A range of skill building projects such as; graphic design, textiles, 3-D wirework, fashion design, animation and painting to name a few.

Y8

FIGURATIVE SCULPTURE

3D figurative project linked to the moving figure – Looking at work by Alberto Giacometti, Henry Moore and Antony Gormley.



WORD & IMAGE - ILLUSTRATION

Investigation into different techniques and styles relating to a more illustrative style. Possible themes include recycled bag design - looking at illustrators from traditional and modern backgrounds.

WORD & IMAGE - EXPERIMENTAL

Investigation into different techniques and styles relating to experimental printmaking. Possible themes include an experimental poster design based on text and image overlay, or a print tile panel.

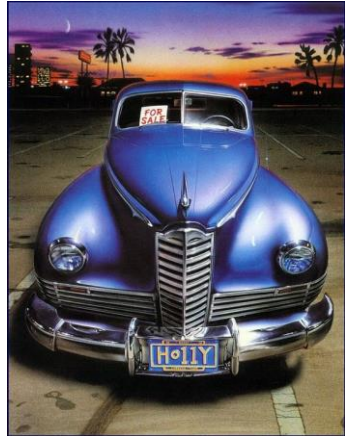


*Ready, Respectful, Responsible: Be the best you can be*



# YEAR 9 ART LEARNING JOURNEY

## PERSPECTIVE



'Creative Futures' is the focus but incorporating perspective and 3-D.

Y9

## PERSPECTIVE

Formal unit that explores the concept of perspective through small exercises creating an understanding of principals relating to it.

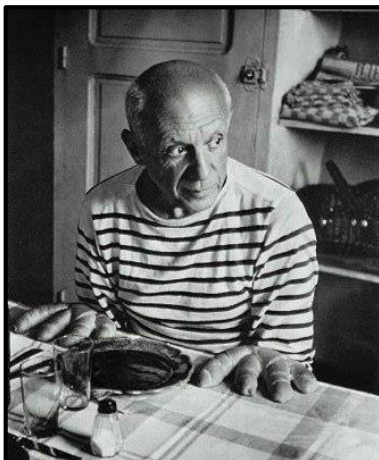
Explore single and two point perspective.

## THE ARTIST'S CHAIR

Creating a functional item that relates to the work of a specific artist. Possible outcomes include pieces of furniture, hats, light stands, candle holders etc.

## ARTIST INSPIRED

Linked to an art movement. To look at the main protagonists involved in the art movement, and to then produce a still life outcome..



"Every child is an artist.  
The problem is how to  
remain an artist  
once we grow up"  
- Pablo Picasso

twistedifter.com

*Ready, Respectful, Responsible: Be the best you can be*

# YEAR 10 & 11 GCSE FINE ART LEARNING JOURNEY

## OBSERVATION UNIT

## PORTRAIT UNIT

## EXAM UNIT



The GCSE course consists of two coursework units that make up 60% of the final mark and an exam unit which make up the remaining 40%.

All work is assessed on four assessment areas and these are equally weighted.

They can be summed up by four words – RECORD, DEVELOP, REFINE & PRESENT.

GCSE

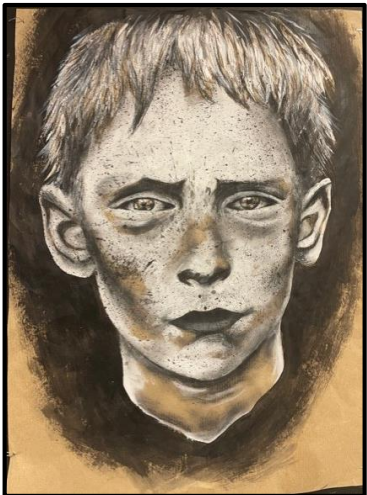
## OBSERVATION UNIT

Observation project – This combines producing observation studies in different media, looking at 3 artists who work in this field and finally producing a still life final outcome.



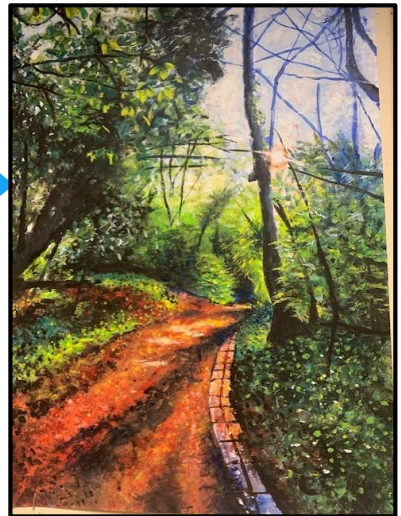
## PORTRAIT UNIT

Portrait project – Studying a variety of different portrait artists and their styles. Using different media and working to a variety of different scales. Culminating in a series of final pieces responding to the prep work.



## EXAM UNIT

Exam unit - paper distributed in spring term of Y11 - Preparatory period looking at artists, developing, refining, recording and presenting original final outcome during a ten hour controlled period..



*Ready, Respectful, Responsible: Be the best you can be*



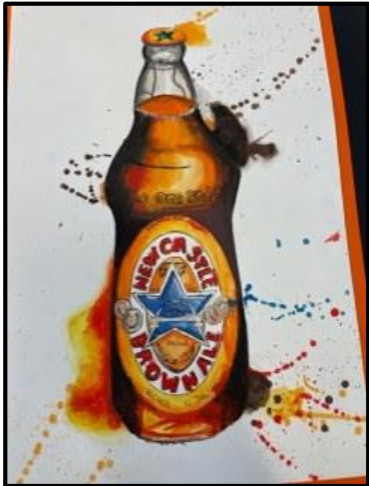
# YEAR 10 & 11 BTEC ART & DESIGN LEARNING JOURNEY

**BISTRO  
PROJECT**

**3D PROJECT**

**ARCHITECTURE  
PROJECT**

**2 X EXAM  
UNITS**

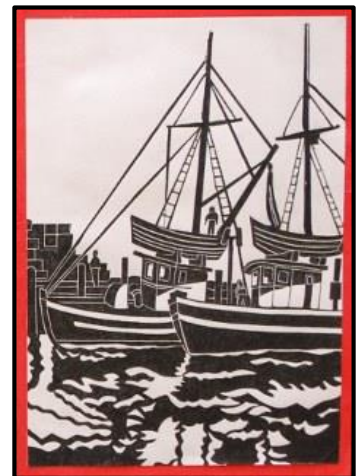


The BTEC course consists of **TWO EXAM** units that are all equally weighted. The first three projects that students produce prepare them for the exam units. These three units are produced in Y10. The subsequent exam units are externally set and are weighted 60/40 – they are produced during Y11.

**BTEC**

## BISTRO PROJECT

The 'Bistro' is a project that asks students to design the new sign for outside of a new café in Yarm as well as an exciting menu to enhance the atmosphere for its diners. Students will explore a range of artists, techniques and sources to build up a body of work and to show the developmental processes to achieve a final piece.



## 3D PROJECT

This project asks students to design a sculpture which will be displayed in various public places such as local parks and museums. The client has requested the sculpture be based around the human form and influenced by sculpture from different cultures. Students will work in a variety of media and materials exploring different artists' ways of working.



## ARCHITECTURE PROJECT

This unit asks students to work on a brief for MIMA and to design promotional items for their new exhibition to be sold in the gift shop. These designs will reflect the theme of 'Architecture and the Local Environment' of the gallery's locality within the Tees Valley. Throughout this project students will explore a range of artists, techniques and sources to build up a body of work and to show the developmental processes.

## 2 X EXAM UNITS

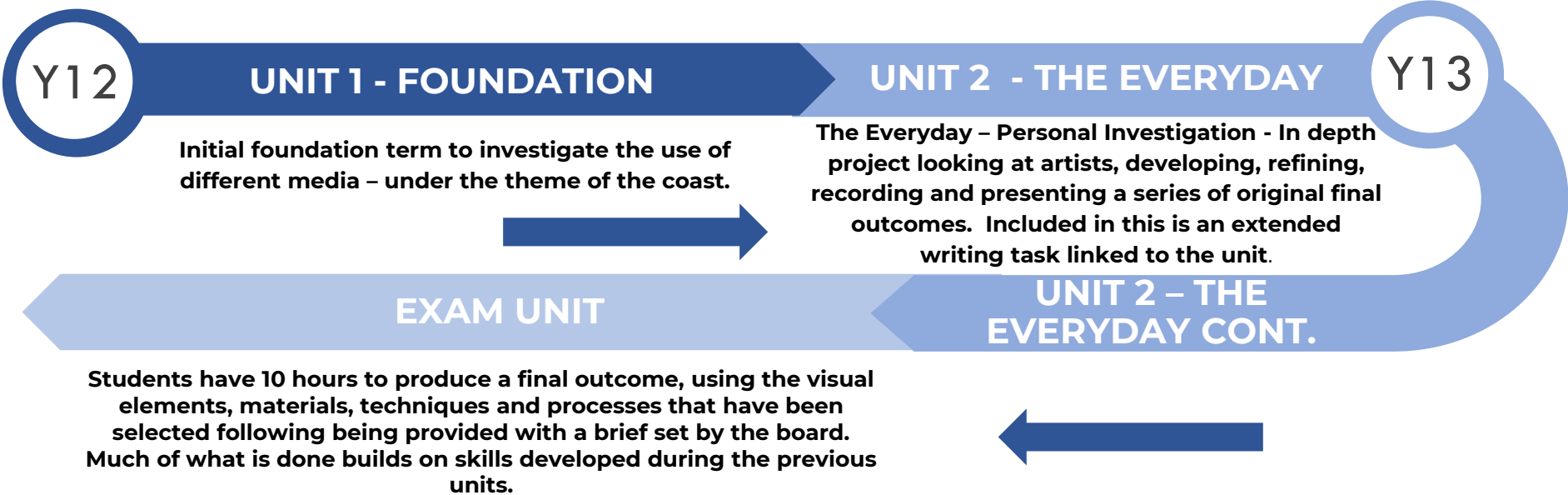
The two exam units are weighted 60/40. The first is produced during the first term of Y11 and at the start of the second term. The second unit is produced between February and May of Y11.



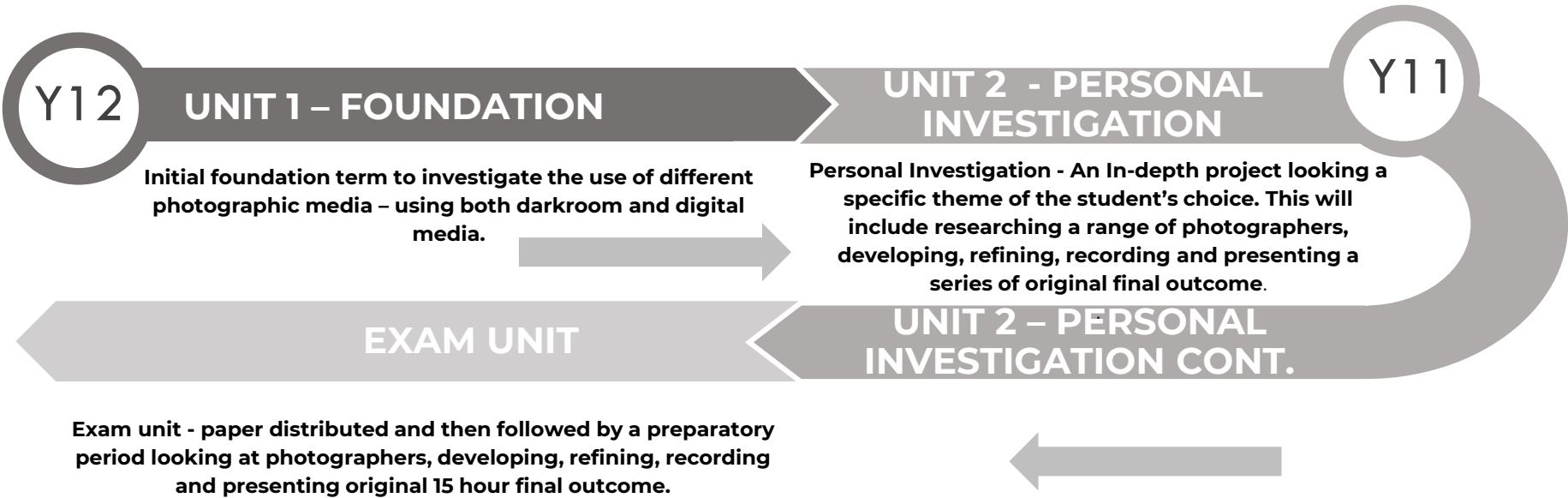
*Ready, Respectful, Responsible: Be the best you can be*

# Y12/13 ART & PHOTOGRAPHY LEARNING JOURNEY

## A LEVEL - FINE ART



## A LEVEL - PHOTOGRAPHY



Ready, Respectful, Responsible: Be the best you can be



# A LEVEL FINE ART LEARNING JOURNEY

FOUNDATION  
UNIT

THE EVERYDAY  
UNIT

EXAM UNIT

KS5

The A Level Fine Art course consists of two coursework units that make up 60% of the final mark and an exam unit which make up the remaining 40%.

All work is assessed on four assessment areas and these are equally weighted.

They can be summed up by four words – RECORD, DEVELOP, REFINE & PRESENT.

FOUNDATION UNIT

Initial foundation term to investigate the use of different media – under the theme of the coast.

PORTRAIT UNIT

The Everyday – Personal Investigation - In depth project looking at artists, developing, refining, recording and presenting a series of original final outcomes. Included in this is an extended writing task linked to the unit.

EXAM UNIT

Exam unit - paper distributed and then followed by preparatory period looking at artists, developing, refining, recording and presenting original final outcome – culminates in a 15 hour final piece.



*Ready, Respectful, Responsible: Be the best you can be*





# A LEVEL PHOTOGRAPHY LEARNING JOURNEY

FOUNDATION  
UNIT

THE EVERYDAY  
UNIT

EXAM UNIT

KS5

The A Level Fine Art course consists of two coursework units that make up 60% of the final mark and an exam unit which make up the remaining 40%. All work is assessed on four assessment areas and these are equally weighted. They can be summed up by four words – RECORD, DEVELOP, REFINE & PRESENT.

FOUNDATION UNIT

Initial foundation term to investigate the use of different media – under the theme of the coast.

PERSONAL  
INVESTIGATION 1 & 2

Personal Investigation - An In-depth project looking a specific theme of the student's choice. This will include researching a range of photographers, developing, refining, recording and presenting a series of original final outcome.

EXAM UNIT

Exam unit - paper distributed and then followed by a preparatory period looking at photographers, developing, refining, recording and presenting original 15 hour final outcome.



*Ready, Respectful, Responsible: Be the best you can be*