

Year 11 How To Revise Evening

**Tuesday 16th September 6pm – Eggescliffe
School Main Hall**



This session will cover:

- **How to 'Choose to Succeed' in Year 11 (Main hall)**
- **Effective revision strategies and techniques from each curriculum area (Sixth form classrooms)**
- **An opportunity for you to speak to Subject leads and Senior staff about any issues/concerns you have with regards to revision/exam preparation (Sixth form classrooms)**
- **Careers fair (local employers and Universities) – a chance to speak to professionals about your child's future plans**

Mr N Gittins
Headteacher

Mrs A Gerrard
Assistant Headteacher

OUTSTANDING 2025 GCSE RESULTS

OVER
60%
GRADE 5 OR HIGHER
IN ENGLISH AND MATHS

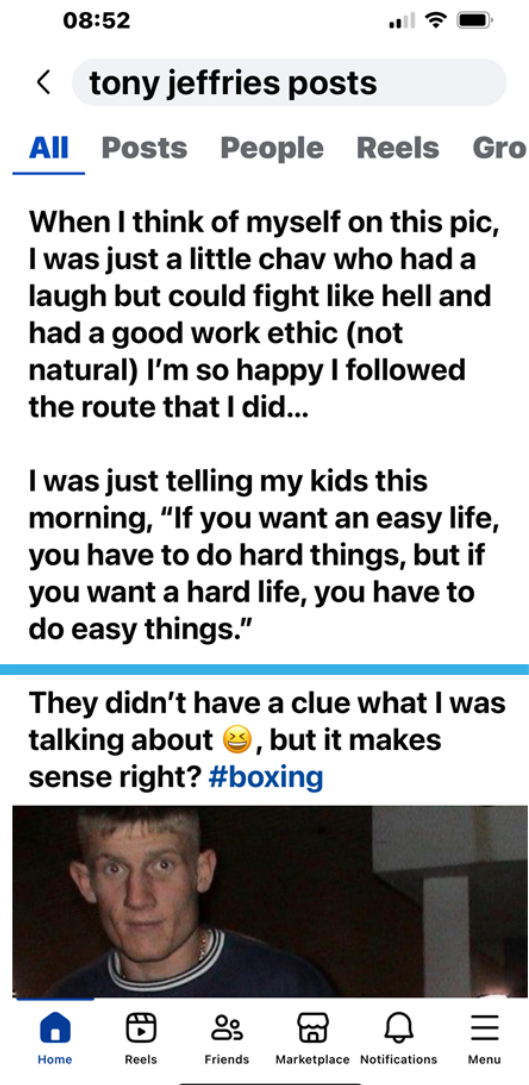
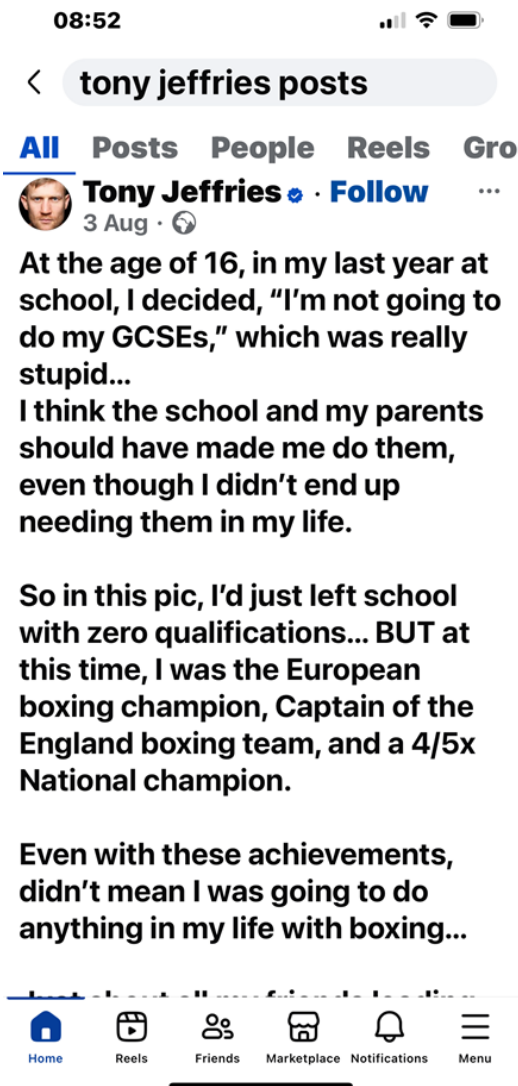
OVER
80%
GRADE 4 OR HIGHER
IN ENGLISH AND MATHS

30%
GRADE 7 OR HIGHER
RESULTS ACHIEVED

OVER
81%
GRADE 4 OR HIGHER
RESULTS ACHIEVED

Why is revision so challenging?

- Requires copious amounts of dedicated time
- Enormity of the scale for GCSEs – 10+ subjects
- **Modern world of screen time availability**
 - **Instant gratification, instant communication, instant entertainment**
- Mobile phones offer instant gratification, which can reduce motivation for slow, effortful revision tasks.
- Excessive phone use disrupts study routines and sleep quality, reducing cognitive function and focus.
 - Quite often the last thing done at night and first thing in the morning is phone use
- **Phones as Learning Tools**
- Educational apps and videos can enhance revision when phones are used purposefully and wisely.
- **Parental Support Strategies**
- Parents can support by encouraging phone-free revision time and promoting balanced technology habits.



Countdown to Exams

1st mock
exams start

**Tuesday
4th
November**

2nd mock
exams start

**19th
January**

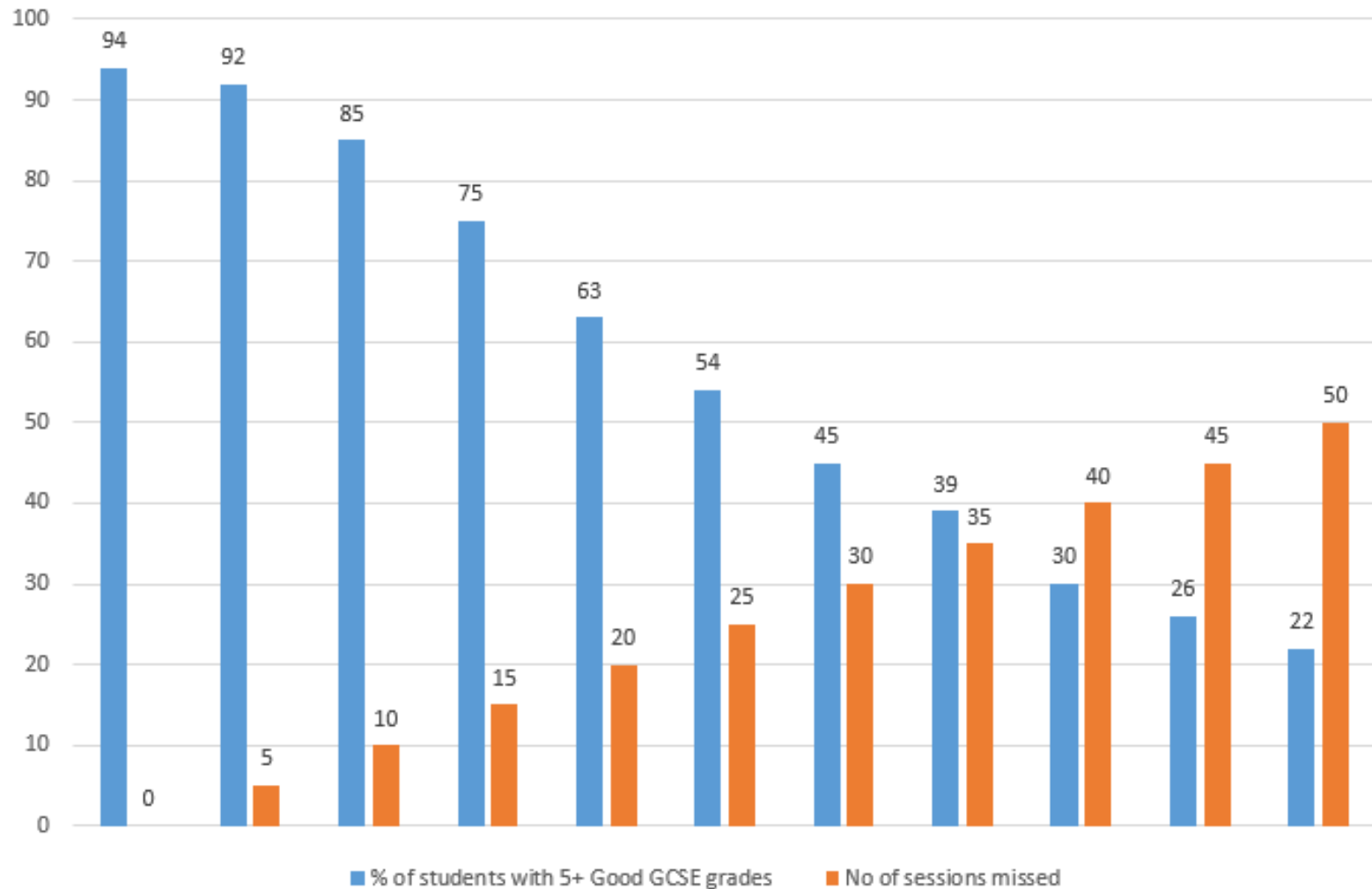
GCSEs start

5th May –

Exam dates

- GCSE exam window starts: **5th May 2026**
- NB: MFL speaking exams and Art exams: ahead of GCSE exam window
- Exam contingency date: **Wednesday 24th June 2026**

The relationship between GCSE grades and attendance



Impact on results...

Last year's Y11 cohort:

% Attendance	Number of students	Students achieving 5 standard passes including Eng & Ma (Grade 4+)	Students achieving 5 strong passes including Eng & Ma (Grade 5+)
Under 90%	42	42%	21%
90-95%	46	70%	41%
95%+	145	84%	68%

Every day of attending school is crucial and every day makes a difference

Choose to Succeed



- Targeted intervention bespoke to student needs
- Registration & lunchtime timetable designed to support revision and preparation for exams and MHWB
- Subject focus on revision strategies (resources on C2S tab on website)
- Celebrating successes & competitions

We will emphasise the importance of:

- Attendance
- Mock exams
- Revision
- Recall in lessons
- Parent/carers support
- Planning/organisation

Importance of Mock Exams

- Mock exams are so important
 - Mock assessments help to identify gaps in learning
 - Excellent preparation for real exams
- Mock exams give teachers an accurate analysis of strengths and weaknesses in every subject
 - Revision topics can be prioritised
 - Intervention can be planned to close knowledge gaps

Importance of revision

Research indicates that no one revision method is preferred. However:

- All research agrees that students who revise prior learning and start revising early will perform well in exams
- Recalling prior learning has never been so important
- Revision should start **now** for year 11 students
- Up to 2 hours per night is suggested
- All homework set is requiring students to recall and review previous learning
- Individual subjects will plan extra sessions to help

Revision / Recall at School

- Teachers have sequenced their subject teaching to maximise the opportunities to revisit and review previous learning while teaching new content
- Students will be continually assessed both formally (mock exams) and informally in the classroom to assess their knowledge and plan to close any gaps in knowledge
- All homework will revisit prior learning and help students to address gaps in knowledge
 - General gaps in knowledge will be addressed with the whole class
 - Students will be supported to address any individual gaps in knowledge

Intervention - LUNCH



Year 11 Revision Timetable

Session	Day – WEEK A				
	Monday	Tuesday	Wednesday	Thursday	Friday
Lunchtime	Science Maths	English German	French History RS	Business GCSE PE	CNAT Sport Geography
After school		German RS	English Comp Sci History	Geography	

Session	Day – WEEK B				
	Monday	Tuesday	Wednesday	Thursday	Friday
Lunchtime	Science Maths	English German	French	Business GCSE PE	CNAT Sport Geography
After school		German	English Comp Sci	Geography	



Wellbeing

During the examination season and whilst preparing for exams, students may encounter periods of stress and therefore it is also important to ensure we focus on their wellbeing...



A journey to a
healthier, happier you.

Universal:

- Kindness Collective
- Wellbeing focused curriculum (PSHE/ RSE)
- Behaviour policy
- Anti-bullying policy
- Wider curricular provision
- Assemblies
- Tutors
- Head of Year
- Learning Managers
- Safeguarding team
- Student leaders
- Careers Advisor
- Parent/carers mental health and wellbeing workshops.

Targeted:

Growing Healthy 0-19 service
Family Hubs
Early Help Assessments
Catalyst mentoring
Academic support assistants
Thrive
ELSA
Alliance school counselling
School peer mentors
Restorative practice
Small group interventions
ATTEND framework
Digital wellbeing services e.g.
Kooth.com

Specialist

Footsteps Teesside
CAMHS
Social care
Eastern Ravens (young carers)
Educational Psychologists
Mental Health Support Teams
School nursing service
Crisis intervention plans
EHCP
Engagement officers

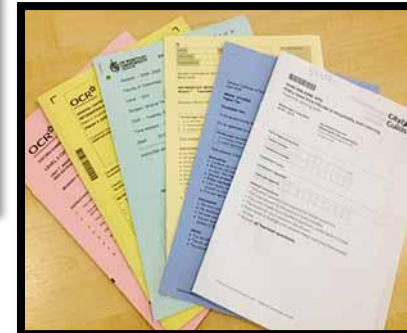
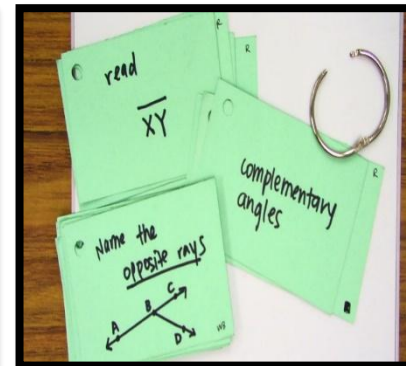
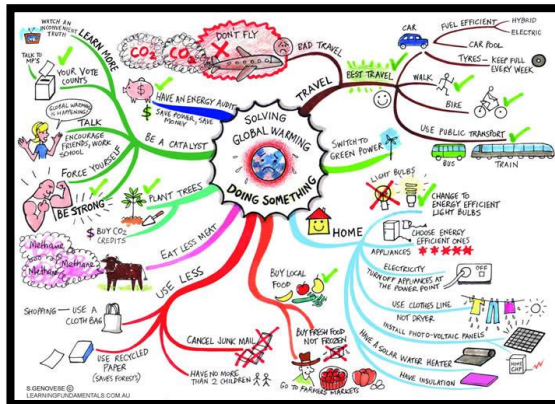
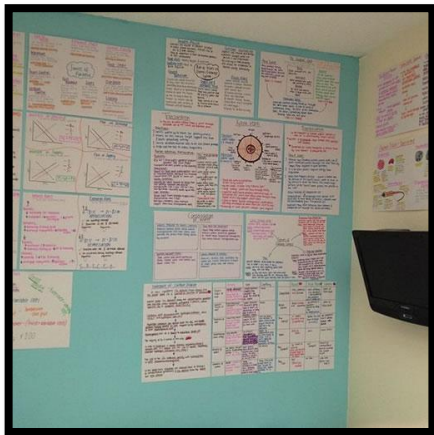
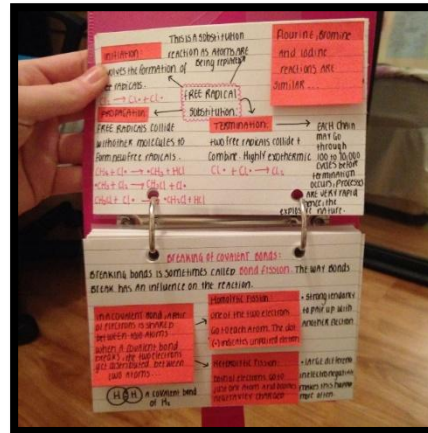
How can parents/carers make a difference?

- You do not have to be an expert in the various subjects
- You are the expert of your child
- Provide a study space in the home without distractions
- Encourage a balance between study and free time
- Keep them active and healthy
- Encourage good sleeping habits
- Encourage excellent attendance

YEAR 11 REVISION COUNTDOWN TIMETABLE

	8 weeks to go Revision		7 weeks to go Revision		6 weeks to go Revision			
Mon 29 th Nov	<ul style="list-style-type: none"> 4.30-5.30 Biology-infection 6.30-7.30 Geography Hazards 	Mon 6 th Dec	<ul style="list-style-type: none"> 4.30-5.30 Biology-ecology 6.30-7.30 Geography Urban challenges 	Mon 13 th Dec	<ul style="list-style-type: none"> 4.30-5.30 Biology-Bioenergetics 6.30-7.30 Maths-Statistics 	Mon 20 th Dec		
Tue 30 th Nov	<ul style="list-style-type: none"> 4.30-5.30 English-Christmas Carol 6.30-7.30 Homework 	Tue 7 th Dec	<ul style="list-style-type: none"> 4.30-5.30 English-Creative writing 6.30-7.30 Homework 	Tue 14 th Dec	<ul style="list-style-type: none"> 4.30-5.30 English-Christmas Carol 6.30-7.30 Homework 	Tue 21 st Dec		
Wed 1 st Dec	<ul style="list-style-type: none"> 4.30-5.30 Maths-Algebra (mathswatch) 6.30-7.30 Chemistry-energy changes 	Wed 8 th Dec	<ul style="list-style-type: none"> 4.30-5.30 Maths-Probability (mathswatch) 6.30-7.30 Chemistry-energy changes 	Wed 15 th Dec	<ul style="list-style-type: none"> 4.30-5.30 Maths-Algebra (mathswatch) 6.30-7.30 German-Healthy living 	Wed 22 nd Dec		
Thur 2 nd Dec	<ul style="list-style-type: none"> English afterschool 4.30-5.30 Homework 7-8pm Training 	Thur 9 th Dec	<ul style="list-style-type: none"> English afterschool 4.30-5.30 Homework 7-8pm Training 	Thur 16 th Dec	<ul style="list-style-type: none"> English afterschool 4.30-5.30 Homework 7-8pm Training 	Thur 23 rd Dec		
Fri 3 rd Dec	<ul style="list-style-type: none"> Geography afterschool 4.30-5.30 Business-Marketing 6.30-7.30 Physics Electricity 	Fri 10 th Dec	<ul style="list-style-type: none"> Geography afterschool 4.30-5.30 Maths-geometry 6.30-7.30 Physics Atomic structures 	Fri 17 th Dec	<ul style="list-style-type: none"> End of term (going to Costa after school) No revision tonight 	Fri 24 th Dec	Family party	Fri 31 st Dec
Sat 4 th Dec	Day off/ Match	Sat 11 th Dec	Day off	Sat 18 th Dec	<ul style="list-style-type: none"> 11.00-12.00 Homework 12.30-1.30 Geography-Rivers 2.00-3.30 Art coursework 	Sat 25 th Dec	Day off	Sat 1 st Jan
Sun 5 th Dec	<ul style="list-style-type: none"> 11.00-12.00 Homework 12.30-1.30 German-holidays 2.00-3.30 Art coursework 	Sun 12 th Dec	<ul style="list-style-type: none"> 11.00-12.00 Homework 12.30-1.30 English-Inspector Calls 2.00-3.30 Art coursework 	Sun 19 th Dec	Birthday celebrations	Sun 26 th Dec	Day off	Sun 2 nd Jan

- Realistic
- Account for commitments and events
- Snacking not bingeing
- Specific (topic not just subject)
- Build in treats/rewards
- Mix up revision strategies.....



A word of caution on using revision guides...

- You need to do something with the information – don't just read the book or highlight key points! Instead, convert the information into a table, diagram, flow map etc
- Cross referencing may be required – revision guides don't always cover every aspect of the course specification! Check your specification carefully as part of your revision to ensure that you have covered EVERYTHING!

OUR SCHOOL

Welcome to Eggescliffe School. We believe in offering the highest quality education, both in the classroom and through our extensive extra-curricular activities.

ABOUT US

- [Admissions](#)
- [Careers Programme](#)
- [Curriculum](#)
- [Ethos and Values](#)
- [Enrichment](#)
- [Expectations and Rules](#)
- [Governors](#)
- [Homework](#)
- [Join Our Team](#)
- [Life at Eggescliffe](#)
- [Personal Development](#)

SCHOOL DATA

- [Attendance and Punctuality](#)
- [Calendar](#)
- [Choose to Succeed](#)
- [Exam Information](#)
- [Exam Success](#)
- [Free School Meals](#)
- [Pupil Premium](#)
- [Inspection](#)
- [Performance Tables](#)
- [Policies](#)

SAFEGUARDING

- [Online Safety](#)
- [Safeguarding](#)
- [SafeSpace Reporting](#)



- ✓ **w/c 22nd September** – Year 11 Choose to Succeed week
- ✓ **4th – 14th November** – Practise Assessments 1 (MOCK 1)
- ✓ **20th November** – Sixth Form Open Evening
- ✓ **11th December** – Subject Parents Evening
- ✓ **12th December** – Sixth Form Applications due in
- ✓ **19th January – 6th Feb** – Practise Assessments 2 (MOCK 2)
- ✓ **9th March** – Practise Assessment Results Event
- ✓ **5th May** – GCSE exams start (provisional date)

Year 11 How To Revise Evening

Thank you for coming tonight.

**A copy of the slides will be sent out
via classcharts in the morning.**

**Please now visit the sixth form block
to speak with subject teachers and
engage with the careers fair.**

Refreshments are provided.



Venue	Subject
SF1	Maths
SF2	English
SF3	Science
SF4	Humanities (Geography, History, RS) and MFL
SF5	Creative Arts (Art, Music, Drama)
SF6	IT, iMedia, Computer Science, Business
SF7	DT, Hospitality, PE & Sport, Health & Social Care
Common room	Careers